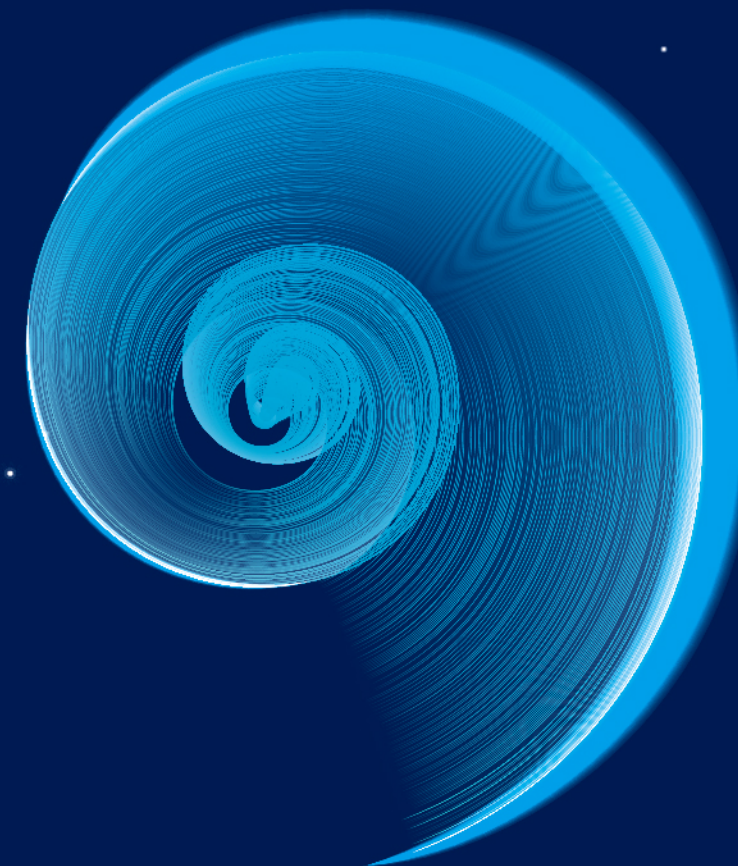


ICCM
2022

第九届世界华人数学家大会
THE 9TH INTERNATIONAL CONGRESS
OF CHINESE MATHEMATICIANS



会议指南 HANDBOOK



ICCM 2022 网站

<http://iccm.tsinghua.edu.cn/iccm2022/#/>



YMSC



SEUMath



SEUYC



NJCAM

01

Organizers' Profiles

Yau Mathematical Sciences Center, Tsinghua University	01
Qiuzhen College, Tsinghua University	01
School of Mathematics, Southeast University	01
Shing-Tung Yau Center, Southeast University	02
Nanjing Center for Applied Mathematics	03
Department of Mathematical Sciences, Tsinghua University	04
Yanqi Lake Beijing Institute of Mathematics and Applications (BIMSA)	04
Tsinghua Sanya International Mathematics Forum (TSIMF)	04

02

Guide for Participants

Notes for Participants	05
Registration Procedures	06

目录

CONTENTS

03

About ICCM

Introduction of ICCM	07
ICCM Committees	08
ICCM Award Selection Committee	10
Medalists	15

04

Agenda

Schedule overview	17
Agenda of Opening Ceremony & Awards Presentation Forum	22

05

Conference Service Information

Accommodation	23
Catering	24
Transportation	25
Gala for ICCM 2022	27
Contact Info	27
Maps	28

06

ACKNOWLEDGEMENTS	30
------------------------	----

01 Organizers' Profiles

Yau Mathematical Sciences Center, Tsinghua University

Tsinghua University established the Mathematical Sciences Center in December 2009. The internationally renowned mathematician Professor Shing-Tung Yau, at the invitation of the university, became the director of the center. In 2014, the China Ministry of Education approved the establishment of the Yau Mathematical Sciences Center, Tsinghua University. Currently, YMSC has 86 full-time faculty members, 47 postdoctoral researchers, over one hundred undergraduates and PhD students. Mathematical research at YMSC covers mainly 5 major areas and 3 interdisciplinary research fields. The research groups of algebra and number theory, mathematical physics, dynamical systems and random analysis have achieved world first class results. YMSC boasts top-notch faculties, including Shing-Tung Yau, Caucher Birkar, Nicolai Reshetikhin, Shiu-Yuen Cheng and Akito Futaki, of which 2 are Fields Medalists, 3 Academician and 3 AMS members. Many outstanding young faculties have get enrolled in various national funds and talent support programs. Yau Mathematical Sciences Center, Mathematical Sciences Department, Qiuzhen College and Yanqi Lake Beijing Institute of Mathematical Sciences and Application have together built a world-class mathematical education and research platform.

Qiuzhen College, Tsinghua University

Qiuzhen College was established in March 2021, headed by Professor Shing-Tung Yau. It's supposed to be the incubator of the next generation top mathematicians, under the guidance of Tsinghua Yau Leading Math Talents Program. Yau Mathematical Talents Undergraduate Program set up in 2018 was merged into Qiuzhen College.

School of Mathematics, Southeast University

The School of Mathematics at Southeast University can date back to the Department of Arithmetic, the National South-east University, founded by Mr. Qing-lai Xiong, a renowned mathematician, when he finished his study and returned from Europe in 1921. After one hundred years of development, it has become a school with equal emphasis on teaching and scientific research and success in the development of multiple disciplines. There are a post-doctoral station in mathematics, two doctoral programs in mathematics and systems science respectively, and a master's program in applied statistics. There are three undergraduate majors, including Mathematics and Applied Mathematics, Information and Computing Science, and Statistics. The faculties consist of 118 members currently, including 27 professors (2 endowed chair professors), 43 associate professors and 38 lecturers. Among them, there are 25 doctoral supervisors and 65 master supervisors. The research discipline covers algebra, geometry, dynamical systems, partial differential equations, scientific computing, network collective intelligence, optimization and control, graph theory, mathematical statistics, mathematical finance and risk management, etc. So far, the school has led the construction of Jiangsu National Center for Applied Mathematics (SEU), Jiangsu Provincial Key Laboratory of Network Collective Intelligence, Key Laboratory of Joint Accessibility, Jiangsu Provincial Center for Information Mathematics Application and other research centers and laboratories. In 2017, Prof. Shing-Tung Yau launched to establish the Shing-Tung Yau Center at Southeast University.

Shing-Tung Yau Center, Southeast University

The Shing-Tung Yau Center at Southeast University (SEUYC), currently a Special Academic Zone and independent institute, was officially founded on the 7th July, 2017. Professor Shing-Tung Yau, the internationally renowned mathematician and the Fields Medal winner, serves as the director of the SEUYC.

Under the leadership of Professor Yau, the SEUYC carries out high quality scientific research and academic communications in both pure and applied mathematics. The developments of advanced mathematical theories and methods serve as powerful tools in tackling important problems in modern engineering. Professor Yau has made a number of groundbreaking achievements in mathematics, physics and other related research areas and the SEUYC is also making a great effort to generalize and make full use of these far-reaching results. Fundamental research has played and is playing an ever increasingly important role in real life applications, including engineering and medical research. Taking advantage of the interdisciplinary nature of Southeast University, the SEUYC aims at providing strong support for making SEU one of the most prestigious universities at home and abroad and for fostering the economic and social development of Jiangsu Province. At the same time, under the guidance of Professor Yau, the SEUYC dedicates to recruiting and cultivating first-rate research talents, and commits to produce scientific outcomes of great interest and importance and to establish an influential center of mathematical science.

The SEUYC conducts high quality research in all the major directions of mathematics and makes efforts to integrate with other disciplines, such as physics, biological medicine, information technology, electronics engineering, electrical engineering, automation and etc. According to the need and the current research development of the center, the SEUYC focuses on recruiting experts and young talents in pure mathematics and applied mathematics (especially in artificial intelligence, data mining, intelligent control and image processing). With support from the related departments and the SEU, the SEUYC uses flexible employment policies to offer a broad development platform to the research talents.

The SEUYC sincerely welcomes talents from all over the world for joining.

Nanjing Center for Applied Mathematics

With the strong support of Nanjing Municipal Committee of CPC and Nanjing Municipal Government, the Nanjing Center for Applied Mathematics (NJCAM) is jointly established by Nanjing Chi-Lin Technology & Innovation Park and Southeast University in December 2019. With independent legal eligibility, the NJCAM is a new type of R&D institute that gathers first-class academic talents to carry out research on important problems in applied mathematics in contemporary society, and to provide efficient solutions and solid theoretical mathematical support for scientific and technological problems in economic and social development. Prof. Shing-Tung Yau, the Fields Medal winner, academician of the American Academy of Sciences, foreign academician of the Chinese Academy of Sciences, and chair professor of Tsinghua University, serves as the director of the NJCAM.

The NJCAM is making efforts to build an exchange platform for mathematical science and mathematical applications, to strengthen collaborations between mathematicians and scientists in other fields. The center focuses on solving mathematical problems in major national scientific and technological tasks and projects in the major needs for regional and enterprise development. Currently, the NJCAM has four research groups: computational geometry and its applications, large-scale scientific computing and media imaging, big data of power grid and high-performance computing of power systems, and autonomous service robots. With the overall goal of "converging first-class scientific research teams, building first-class R&D institute, and producing first-class original results", the NJCAM aims to establish international first-rate research directions in applied mathematics, and to carry out modeling, analysis and computing in important mathematical application problems.

The center dedicates to recruiting top research and application-oriented talents. Based on the research projects, the NJCAM not only recruits full-time researchers, but also provides flexible job opportunities. Welcome global experts, scholars and young talents to apply for joining.

Department of Mathematical Sciences, Tsinghua University

Tsinghua's Mathematical Sciences Discipline has a glorious and long history. In the early years, the Discipline made a great success from 1927 to 1952. It also experienced special stages of adjustment and reconstruction from 1952 to 1979. In 1979, Tsinghua set up a Department of Applied Mathematics and then changed the name to the Department of Mathematical Sciences in 1999. This marked a new stage of vigorous development. It has been proven that with continuous efforts, the Department has developed into one of China's top departments for Mathematical Sciences. It now has 89 faculty members, with major research areas including Mathematical Physics, Algebraic Geometry, Number Theory, Representation Theory, Differential Geometry and Geometric Analysis, Dynamical System and Fractal Geometry, and Nonlinear Analysis and Differential Equation, Computational Mathematics, Operational Research, Probability Theory and Statistics and Financial Mathematics, Interdisciplinary Mathematics etc.

Yanqi Lake Beijing Institute of Mathematics and Applications (BIMSA)

Yanqi Lake Beijing Institute of Mathematics and Applications (BIMSA) is a world-class New-Types of Research and Development Institution. The permanent address of BIMSA is the Beijing Xingfa Cement Plant, located at the side of Yanqi Lake, north of Huairou Science City, which covers an area of 62,000m². The mathematics master, Shing-Tung Yau, is the president of BIMSA. BIMSA follows the development mode of 75% upstream applied mathematics and 25% fundamental mathematics, and encourages researchers to spend 80% of their time on individual research and 20% on the fields of national concern. BIMSA recruits talents from world top universities, scientific institutions and scientific corporations. Today, the institute has attracted a total of 130 scientific researchers, including 32 Assistant Researchers or above and 55 postdocs. 17 researchers from world-renowned universities and institutes are expected to join BIMSA in 2022. By the end of this year, the number of researchers will reach more than 150.

Tsinghua Sanya International Mathematics Forum (TSIMF)

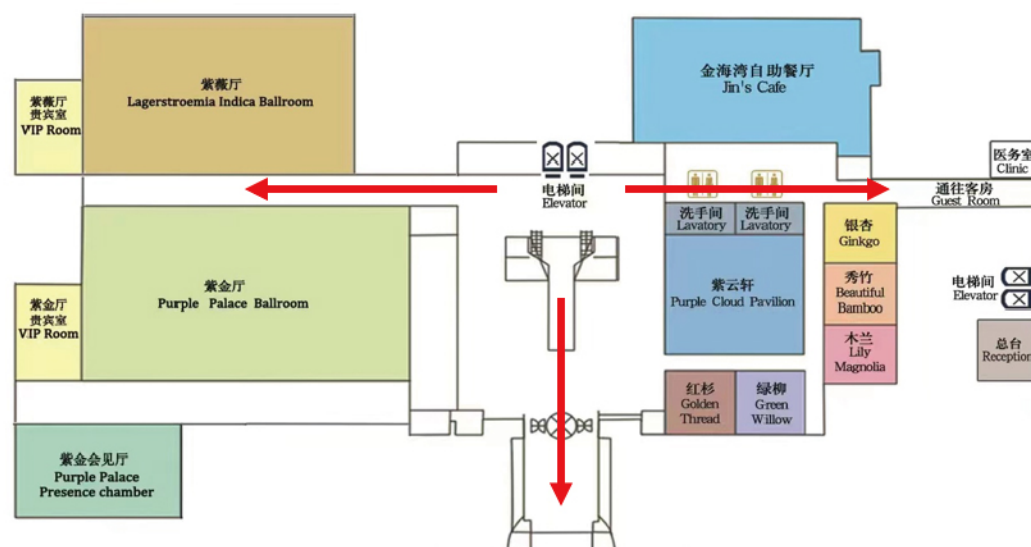
The proposal of the Tsinghua Sanya International Mathematics Forum (TSIMF) was initiated by Shing-Tung Yau, an internationally renowned mathematics master. With the support of the Central Government and the strong support of Hainan Province and Sanya City, an international academic conference center was built by Tsinghua University. It is located in the southernmost tropical coastal city of Hainan Province, Sanya City, covering an area of 140 acres. Since its establishment in 2013, it has held more than 3000 academic conferences, with more than 7000 attendants, from over 70 countries across the world, including 3 Nobel Prize Laureates, 10 Fields Medalists, etc.

02 Guide for Participants

Notes for Participants

This handbook is intended to provide the participants with information about ICCM 2022, and is only for reference during the conference. For any matter not covered in this handbook, schedule changes and temporary events, please pay attention to the notices released at the venues. In order to achieve the success of the Conference and a better experience for you and other participants, please bear the following matters in mind:

1. Please abide by the government epidemic prevention and control regulations and protect yourself during the conference by wearing a mask, washing hands regularly, keeping social distance, etc. Specific requirements shall be informed in advance and be clearly marked on site.
2. During the Conference, please wear your badge all the time for entering/exiting the conference venues, dining and transportation. For dining, please use the meal voucher. If your badge is lost or damaged, please contact the staff in time to reissue a new one.
3. Before entering the venue, please learn about the emergency exits and escape routes first; and in case of an emergency, please follow the instructions of the staff and evacuate from the dangerous areas in an orderly and rapid manner.



Plan of the emergency exits and escape routes

4. DO NOT bring flammable or explosive materials into the venue and hotel. Please keep your valuables safe.
5. After entering the venues, please turn off your mobile phone and other electronic devices, or set them to the mute state.
6. DO NOT smoke at the venues or other non-smoking areas.
7. During the conference, the organizer will arrange accompanying doctors. If you feel sick, contact the staff in time.

- Participants will be required to show the badge to attend the Opening Ceremony & Awards Presentation | Forum and various other events. Please obtain your badge at the registry.

- Tickets for the ICCM Gala will be allotted on a first-come-first-served basis from 14:00 to 17:00 on Wednesday, August 3rd, in the lobby on the first floor of the Purple Palace Conference Center.

Registration Procedures

Registration Time

08:00-20:00 July 29th & 30th (Friday & Saturday)

Five locations in three hotels as below

Registry

There are five registries available for the conference participants on July 29th and 30th at the five locations of the following three hotels respectively: lobby of Purple Mountain Villa of the Purple Palace, first floor of Zijin Building of the Purple Palace, first floor of Jinling Building of the Purple Palace, lobby of the Novotel Nanjing East Suning and lobby of the Nanjing Platinum Hanjue Hotel.

Registration Tips

1. Participants who have registered online and paid the registration fee shall check the personal information, name and phone number, at the registry to obtain the conference materials.
2. Participants who have registered online but have not paid the registration fee shall pay the fee online or by cash or by card, and fill in the invoicing information at the registry, and then obtain the conference materials.
3. After completing the registration process, please check in at the front desk of the hotel with a valid personal ID card or passport.

Note:

The conference materials include a badge, masks, Conference Handbook, Academic Handbook, epidemic prevention supplies etc.

03 About ICCM

Introduction of ICCM

The International Congress of Chinese Mathematicians (ICCM), launched by Professor Shing-Tung Yau in 1998, is aimed at strengthening connections between Chinese mathematicians at home and abroad, discussing the latest international research progress of mathematical science, and promoting the common development of mathematics for China and the world.

ICCM is a triennial event hosted by institutions in the Chinese mainland, Hong Kong and Taiwan. The first congress was held in Beijing in 1998. ICCM 2022, the 9th session will be held in Nanjing, China, from July 31 to August 5, jointly organized by Southeast University, Tsinghua University and Nanjing Chi-Lin Technology Innovation Park. On July 31, the Chern Prize, John Coates International Cooperation Award, Mathematics Contribution Award and ICCM Medal of Mathematics, will be announced at the opening ceremony and award presentation. At ICCM 2022, there will be more than 300 academic lectures, which cover a wide range of subjects in mathematical sciences from number theory, geometry, differential equations to statistics, artificial intelligence and bio-mathematics.

On each session, ICCM recognizes a select few individuals for their extraordinary accomplishments in pure and applied mathematics, as well as their dedicated services to furthering the development of mathematics around the world.

- **ICCM Medal of Mathematics** (formerly named "Morningside Medal of Mathematics"), established in 1998, is the highest award in the world of Chinese mathematics, with the reputation of "Chinese Fields Medal". It recognizes exceptional mathematicians of Chinese descent under the age of 45 for their outstanding achievements in pure and applied mathematics and for their outstanding contributions to the development of mathematics.

- **Chern Prize**, established in 2001 in honor of Professor Shiing-Shen Chern, recognizes mathematicians and individuals of Chinese descent who have made exceptional contributions to mathematical research or public service activities in support of mathematics.

- **John Coates International Cooperation Award** (formerly named "ICCM International Cooperation Award"), established in 2004, is presented to an individual who has promoted the development of mathematics in mainland China, Hong Kong, and Taiwan through collaboration, teaching and supporting of Chinese mathematicians. In 2022, the Award was officially renamed in honor of the late world-renowned number theorist John Coates, for his dedication and devotion to promoting the exchanges between Chinese and the world mathematical community since the 1990s.

- **ICCM Mathematics Contribution Award**, established in 2022, recognizes outstanding mathematicians who have made significant lifelong contributions to the development of Chinese mathematics.

ICCM Committees

Local Organizing Committee

Advisor: Shing-Tung YAU

Director: Gang WU

Vice-directors: Xiangqian FAN, Chengjun ZHAO, Baijun SUN, Haibo QIU

Members: Shuanhong WANG, Jianming FENG, Zhirui YE, Jijun LIU, Weibing LU, Liming Zhang, Xiaobing ZHANG, Yinghong WU, Dasuo YANG, Qing YU, Yonghong GU, Jiasheng QIAN, Jinde CAO, Hao FU, Min Ji

Secretary-General: Yinghong Wu

Scientific Committee

Name	Affiliation	Name	Affiliation
Raymond Honfu CHAN	City University of Hong Kong	Xiaotao SUN	Tianjin University
Bing-Long CHEN	Sun Yat-sen University	Mao-Pei TSUI	Taiwan University
Shiu-Yuen CHENG	Tsinghua University	Xue-Cheng TAI	Hong Kong Baptist University
Shaoqiang DENG	Nankai University	Chin-Lung WANG	Taiwan University
Jianqing FAN	Princeton University	Mu-Tao WANG	Columbia University
Xuhua HE	The Chinese University of Hong Kong	Kaishun WANG	Peking University
Lei FU	Tsinghua University	Shicheng WANG	Peking University
Jixiang FU	Fudan University	Xiaoming WANG	Southern University of Science and Technology
Sen HU	University of Science and Technology of China	Wing Hung WONG	Stanford University
Xiaoqing JIN	University of Macau	Hao WU	Tsinghua University
Samuel KOU	Harvard University	Chao XIA	Xiamen University
Chun-Kong LAW	Taiwan Sun Yat-sen University	Jie XIAO	Tsinghua University
Kai-Wen LAN	University of Minnesota	Zhouping XIN	The Chinese University of Hong Kong
Tze Leung LAI	Stanford University	Hong-Wei XU	Zhejiang University
Yng-Ing LEE	Taiwan University	Kun XU	The Hong Kong University of Science and Technology
Fengchun LEI	Dalian University of Technology	Lo YANG	Chinese Academy of Sciences
Jun LI	Fudan University	Xiaokui YANG	Tsinghua University

Scientific Committee

Name	Affiliation	Name	Affiliation
Si LI	Tsinghua University	Hong-Tzer YAU	Harvard University
Wen-Ching Winnie LI	Taiwan Tsing Hua University	Shing-Tung YAU	Tsinghua University
Chang-Shou LIN	Taiwan University	Jing YU	Taiwan University
Wen-Wei LIN	Yang Ming Chiao Tung University	Xiaoming YUAN	The University of Hong Kong
Yong LIN	Tsinghua University	Shou-Wu ZHANG	Princeton University
Jianya LIU	Shandong University	Pu ZHANG	Shanghai Jiao Tong University
Jijun LIU	Southeast University	Huijiang ZHAO	Wuhan University
Kefeng LIU	Chongqing University of Technology	Fangyang ZHENG	Chongqing Normal University
Xiaowu MU	Zhengzhou University	Xiangyu ZHOU	Chinese Academy of Sciences
Hourong QIN	Nanjing University	Xi-Ping ZHU	Sun Yat-sen University
Haiwei SUN	University of Macau	Jun ZOU	The Chinese University of Hong Kong
Peng SHAN	Tsinghua University	Wenming ZOU	Tsinghua University

Executive Committee

Name	Affiliation	Name	Affiliation
Meng CHEN	Fudan University	Nai-Cheng LEUNG	Chinese University of Hong Kong
Jungkai CHEN	Taiwan University	Wenwei LIN	Yang Ming Chiao Tung University
Shiu-Yuen CHENG	Tsinghua University	Ngaiming MOK	The University of Hong Kong
Shun-Jen CHENG	Academia Sinica	Yat-Sun POON	University of California, Riverside
Fan Chung GRAHAM	University of California, San Diego	Xiao-Ping WANG	Hong Kong University of Science and Technology
Yizhao HOU	California Institute of Technology	Jie XIAO	Tsinghua University
Xiao-Qing JIN	University of Macau	Hongwei XU	Zhejiang University

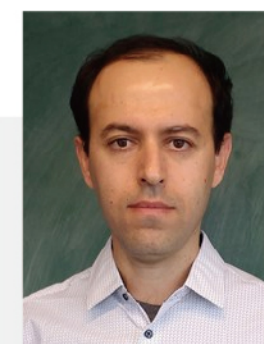
Organizing Committee

Name	Affiliation	Name	Affiliation
Shiu-Yuen CHENG	Tsinghua University	Yinghong WU	Southeast University
Haizhong LI	Tsinghua University	Peng XU	Tsinghua University
Si LI	Tsinghua University	Xiaokui YANG	Tsinghua University
Yong LIN	Tsinghua University	Yi ZHU	Tsinghua University
Zhengwei LIU	Tsinghua University	Wenming ZOU	Tsinghua University
Zuoqiang SHI	Tsinghua University	Huaiqing ZUO	Tsinghua University

ICCM Award Selection Committee
**2022 ICCM MEDAL OF MATHEMATICS
Selection Committee**


Shing-Tung Yau (Chair)
Tsinghua University

Professor Yau is the Chair Professor at Tsinghua University, Director of Yau Mathematical Sciences Center at Tsinghua University, Director of The Institute of Mathematical Sciences at the Chinese University of Hong Kong, and Director of the Morningside Center of Mathematics at the Chinese Academy of Sciences. His research interests include differential geometry, differential equations, and general relativity. He is a member of several academies including the Chinese Academy of Sciences, the Russian Academy of Sciences, and the National Academy of Sciences, US. Professor Yau has been one of the key individuals behind the founding of the ICCM Medal of Mathematics, and the International Congress of Chinese Mathematicians. His main honors include the Fields Medal (1982), the Crafoord Prize in Mathematics (1994), the U.S. National Medal of Science (1997), the Wolf Prize (2010), the Marcel Grossmann Award (2018) and the People's Republic of China International Scientific and Technological Co-operation Award (2003).



Caucher Birkar
Tsinghua University

Professor Birkar is a professor at the Yau Mathematical Sciences Center of Tsinghua University. His research interests include algebraic geometry, especially higher dimensional birational geometry. His past honors include the Philip Leverhulme prizes (2010), the Fields Medal (2018), the Fellow of the Royal Society (2019).



Camillo de Lellis
 Institute for Advanced Study

Professor De Lellis is a professor at the School of Mathematics of the Institute for Advanced Study. His primary research areas are partial differential equations and geometric measure theory. Professor De Lellis is most known for his joint work with László Székelyhidi Jr. on the Euler equations in incompressible fluid dynamics and his joint work with Emanuele Spadaro on the regularity of area minimizing currents. He is a recipient of the Stampacchia Medal (2009), the Caccioppoli Prize (2014), the Fermat Prize, jointly with Martin Hairer (2014), the Amerio Prize (2015), and the Bocher Prize (2020).



Simon K. Donaldson
 Imperial College London

Professor Donaldson is a professor at Imperial College London. His main research area is differential geometry. He is a fellow of the Royal Society and a foreign member of the national science academies of France, Sweden and the United States. In 2014, he was appointed as a permanent member of the Simons Center for Geometry and Physics at Stony Brook University. Professor Donaldson is a recipient of the Fields Medal (1986), the Crafoord Prize in Mathematics (1994), the King Faisal International Prize for Science (2006), the Shaw Prize in Mathematical Sciences (2009), and the Wolf Prize, jointly with Yakov Eliashberg (2020).



Björn Engquist
 The University of Texas at Austin

Professor Engquist is the Computational and Applied Mathematics Chair and a professor at the University of Texas at Austin. His recent work includes homogenization theory, multi-scale methods, and fast algorithms for wave propagation. Professor Engquist received his Ph.D. in Numerical Analysis from Uppsala University in 1975. He is a member of the Royal Swedish Academy of Sciences, the Royal Swedish Academy of Engineering Sciences, and the Norwegian Academy of Science and Letters. His past honors include: the Guggenheim Fellowship (1991), the first James H. Wilkinson Prize in Numerical Analysis and Scientific Computing (1982), the Peter Henrici Prize (2011), the Birkhoff Prize in Applied Mathematics (2012), and the ICCM International Cooperation Award (2016).



Alessio Figalli
 ETH Zürich

Professor Alessio Figalli is a professor of mathematics at ETH Zürich, he works in the theory of optimal transportation, with particular emphasis on the regularity theory of optimal transport maps and its connections to Monge-Ampère equations. His past honors include the Prize of the European Mathematical Society (2012), Invited Speaker at the International Congress of Mathematicians (2014), the Feltrinelli Prize of the Accademia Nazionale dei Lincei (2017), and the Fields Medal (2018).



Ciprian Manolescu
Stanford University

Professor Ciprian Manolescu is a professor in the topology group and the geometry group of Mathematics at Stanford University. His research interests include gauge theory, low-dimensional topology, and symplectic geometry. He had worked on topics such as the Seiberg-Witten equations, Heegaard Floer theory, and Khovanov homology. His past honors include Three Gold Medals at the International Mathematical Olympiad (1995-1997), the AMS/MAA/SIAM Frank and Brennie Morgan Prize for Outstanding Research in Mathematics (2001), the National Science Foundation grants (2008-2023), the European Mathematical Society Prize (2012).



Wilfried Schmid
Harvard University

Professor Schmid is the Dwight Parker Robinson Professor of Mathematics at Harvard University. In 2012 he became a fellow of the American Mathematical Society, and in 2020 he was elected as a member of the U.S. National Academy of Sciences. His research revolves around Lie groups and their representations. He has introduced geometric methods in the study of infinite dimensional representations, and conversely has applied representation-theoretic methods in other areas of mathematics. Professor Schmid has served as the Mathematics Advisor to the Massachusetts Department of Education, a member of the Steering Committee of Mathematics of the National Assessment of Educational Progress, and a member of the National Mathematics Advisory Panel.



Horng-Tzer Yau
Harvard University

Professor Yau is the Merton professor of mathematics at Harvard University. His research includes probability theory, quantum dynamics, random matrices, differential equations, and nonequilibrium physics. Professor Yau's research falls within the realm of mathematical physics and probability theory, developing approaches to quantum dynamics, statistical mechanics, stochastic matrices and nonlinear partial differential equations, and studying natural phenomena, particularly multibody and nonlinear problems, ranging from Brownian motion at the microscopic scale to astral stability at the astronomical scale. His past honors include the Poincaré prize (2000), the ICCM Medal of Mathematics prize (2001), the Simons Investigator Award (2012).

2022 CHERN PRIZE / ICCM INTERNATIONAL COOPERATION AWARD Selection Committee

Shing-Tung Yau (Chair)

Professor at Tsinghua University

Mu-Tao Wang

Professor at Columbia University

Jie Xiao

Professor at Tsinghua University

Zhouping Xin

Professor at the Chinese University of Hong Kong

Lo Yang

Academician at the Chinese Academy of Sciences

Shiu-Yuen Cheng

Professor at Tsinghua University

Medalists
ICCM GOLD MEDAL OF MATHEMATICS

Date	Name	Date	Name
2019	Zhiwei Yun / Xinwen Zhu	2007	Xu-Jia Wang
2016	Wei Zhang / Si Li	2004	Kefeng Liu / Zhouping Xin
2013	Xuhua He / Ye Tian	2001	Jun Li / Horng-Tzer Yau
2010	Mu-Tao Wang / Sijue Wu	1998	Chang-Shou Lin / Shouwu Zhang

ICCM GOLD MEDAL OF APPLIED MATHEMATICS

Date	Name	Date	Name
2016	Wotao Yin	2007	Jianqing Fan
2013	Xianfeng Gu	2004	Yizhao Hou / Zhiliang Ying
2010	Jun Liu		

CHERN PRIZE

Date	Name	Date	Name
2019	Wenwei Lin / Stephen Shing-Toung Yau	2007	Shiu-Yuen Cheng / Mu-Tao Wang
2016	Xi-Ping Zhu / Ronnie C. Chan	2004	Lo Yang / Fanghua Lin
2010	Jiaying Hong / Conan Nai-Chung Leung / Wen-Ching Lee	2001	Song-Sun Lin / Jiu-Kang Yu

ICCM SILVER MEDAL OF MATHEMATICS

Date	Name	Date	Name
2019	Baohua Fu / Zhengwei Liu / Pinyan Lu / Peng Shan / Zhengdao Yu	2007	Chiu-Chu Liu / Lizhen Ji / Shi Jin / Chiun-Chuan Chen / Ye Tian
2016	Bing-Long Chen / Kai-Wen Lan / Ronald Lok Ming Lui / Jun Yin / Lexing Ying / Zhiwei Yun	2004	Jin-Yi Cai / Ai-Ko Liu / Xi-Ping Zhu
2013	Chieh-Yu Chang / Xiaoqing Li / Hao Xu / Tai-Peng Tsai	2001	Daqing Wan / Chin-Lung Wang / Sijue Wu / Nanhua Xi
2010	Jungkai Alfred Chen / Meng Chen / Jixiang Fu / Juncheng Wei	1998	Raymond Hon-fu Chan / Chong-Qing Cheng / Kefeng Liu / Tong Yang

ICCM INTERNATIONAL COOPERATION AWARD

Date	Name	Date	Name
2019	Vaughan F.R. Jones	2010	Richard M. Schoen
2016	Björn Engquist	2007	Stanley J. Osher
2013	Jean-Pierre Serre	2004	John H. Coates

MORNINGSIDE LIFETIME ACHIEVEMENT AWARD IN MATHEMATICS

Date	Name
2001	Shiing-Shen Chern

MORNINGSIDE SPECIAL ACHIEVEMENT AWARD IN MATHEMATICS

Date	Name
2013	Yitang Zhang

MORNINGSIDE MENTOR AWARD IN MATHEMATICS

Date	Name
2013	Chengbiao Pan

04 Agenda

Schedule Overview

July 30 (Sat.)

Time	Event	Venue
08:00–20:00	Register	
09:00–12:00	ICCM Creative Undergraduate Thesis Award Selection	Crouching Tiger, the Purple Palace Conference Center
14:30–15:30	The Inaugural Ceremony of the Statue of Professor Qing-Lai Xiong	Presence Chamber, the Purple Palace Conference Center
16:00–17:00	The Inaugural Ceremony of the Jiangsu National Center of Applied Mathematics (Southeast University)	Presence Chamber, the Purple Palace Conference Center
18:00–20:00	Dinner (Buffet)	Jin's Café, the Purple Palace Conference Center

July 31 (Sun.)

Time	Event	Venue
09:00–12:00	Opening Ceremony & Awards Presentation	Purple Palace Ballroom, the Purple Palace Conference Center
10:30–11:00	Press Briefing	Presence Chamber, the Purple Palace Conference Center
12:00–14:00	Lunch (Buffet)	Lagerstroemia Indica Ballroom and Jin's Café at the Purple Palace Conference Center & Pavilion Café at Purple Mountain Villa
14:00–16:15	ICCM Forum: Fundamental Science and International Cooperation	Purple Palace Ballroom, the Purple Palace Conference Center
17:30–20:00	ICCM Graduation Thesis Award Ceremony & Banquet	Lagerstroemia Indica Ballroom, the Purple Palace Conference Center (Invited guests)
18:00–20:00	Dinner (Buffet)	Jin's Café at the Purple Palace Conference Center & Pavilion Café at Purple Mountain Villa

August 1 (Mon.)

Time	Event	Venue
08:00–10:00	Distinguished Lectures Caucher BIRKAR/Hugh WOODIN	International Convention Hall, the Purple Palace Conference Center
10:00–10:15	Tea Break	
10:15–11:15	Distinguished Lecture Chiu-Chu Melissa LIU	International Convention Hall, the Purple Palace Conference Center
11:20–12:20	Plenary Lectures	International Convention Hall, Presence Chamber, Curling Dragon, Crouching Tiger and Golden Thread at the Purple Palace Conference Center
12:20–13:20	Lunch (Buffet)	Jin's Café, the Purple Palace Conference Center
13:20–15:25	Plenary Lectures	International Convention Hall, Presence Chamber, Curling Dragon, Crouching Tiger and Golden Thread at the Purple Palace Conference Center
15:25–15:40	Tea Break	
15:40–17:15	Invited Lectures	The Purple Palace Conference Center
18:00–20:00	Banquet/Dinner	Lagerstroemia Indica Ballroom (Banquet) and Jin's Café (Buffet), the Purple Palace Conference Center

August 2 (Tues.)

Time	Event	Venue
08:00–10:00	Distinguished Lectures Mark KISIN/Nicolai RESHETIKHIN	International Convention Hall, the Purple Palace Conference Center
10:00–10:15	Tea Break	
10:15–11:15	Distinguished Lecture Jian DING	International Convention Hall, the Purple Palace Conference Center
11:20–12:20	Plenary Lectures	International Convention Hall, Presence Chamber, Curling Dragon, Crouching Tiger and Golden Thread at the Purple Palace Conference Center
12:20–13:20	Lunch(Buffet)	Jin's Café, the Purple Palace Conference Center
13:00–16:00	Forum: Applied Mathematics & AI	Osmanthus, Red Sandal and Lotus at the Purple Palace Conference Center
13:30–17:00	Roundtable Forum: Middle School Mathematics Education	Yangtze, Purple Mountain Villa at the Purple Palace
13:20–14:55	Invited Lectures	The Purple Palace Conference Center
14:55–15:10	Tea Break	
15:10–15:55	Invited Lectures	The Purple Palace Conference Center
16:00–17:00	Distinguished Lecture Alessio FIGALLI	International Convention Hall, the Purple Palace Conference Center
18:00–20:00	ICCM Creative Undergraduate Thesis Award Ceremony & Student-Faculty Exchange Meeting Banquet	Lagerstroemia Indica Ballroom, the Purple Palace Conference Center
18:00–20:00	Dinner (Buffet)	Jin's Café, the Purple Palace Conference Center

August 3(Wed.)

Time	Event	Venue
08:00–10:00	Distinguished Lectures Zhouping XIN/Kenji FUKAYA	International Convention Hall, the Purple Palace Conference Center
10:00–10:15	Tea Break	
10:15–11:50	Invited Lectures	The Purple Palace Conference Center
11:50–13:20	Lunch (Buffet)	Jin's Café, the Purple Palace Conference Center
13:20–14:55	Invited Lectures	The Purple Palace Conference Center
14:00–16:30	Roundtable Forum: Mathematics + Industry	Yangtze, Purple Mountain Villa
14:55–15:10	Tea Break	
15:10–16:40	Roundtable Forum:Female Minority Mathematicians	Osmanthus, the Purple Palace Conference Center
15:10–17:35	Invited Lectures	The Purple Palace Conference Center
17:35–19:00	Dinner (Buffet)	Jin's Café, the Purple Palace Conference Center
19:00–20:30	Gala for ICCM 2022	International Convention Hall, the Purple Palace of Nanjing

Agenda of Opening Ceremony & Awards Presentation | Forum

August 4 (Thu.)

Time	Event	Venue
08:00–10:00	Plenary Lectures	International Convention Hall, Presence Chamber, Curling Dragon, Crouching Tiger and Golden Thread at the Purple Palace Conference Center
10:00–10:15	Tea Break	
10:15–11:50	Invited Lectures	The Purple Palace Conference Center
11:50–13:20	Lunch (Buffet)	Jin's Café, the Purple Palace Conference Center
13:20–14:55	Invited Lectures	The Purple Palace Conference Center
14:55–15:10	Tea Break	
15:10–16:45	Invited Lectures	The Purple Palace Conference Center
16:50–17:10	Contributed Lectures	The Purple Palace Conference Center
18:00–20:00	Dinner (Buffet)	Jin's Café, the Purple Palace Conference Center

August 5 (Fri.)

Time	Event	Venue
08:00–09:35	Invited Lectures	The Purple Palace Conference Center
09:35–09:50	Tea Break	
09:50–10:35	Invited Lectures	The Purple Palace Conference Center
11:30–13:20	Lunch (Buffet)	Jin's Café, the Purple Palace Conference Center
13:20–18:00	Free Discussion	
18:00–20:00	Dinner (Buffet)	Jin's Café, the Purple Palace Conference Center

09:00–12:00 Opening Ceremony & Awards Presentation

09:00–09:10	Introduction of Distinguished Guests
09:10–09:40	Welcome Address Shing-Tung Yau President of the International Congress of Chinese Mathematicians Distinguished Guests
09:40–10:30	Awards Presentation ICCM Silver Medal of Mathematics ICCM Gold Medal of Mathematics Chem Prize ICCM Mathematics Contribution Award ICCM John Coates International Cooperation Award Group Photos of winners and guests
10:30–11:10	Press Briefing
10:30–10:50	Tea Break
10:50–12:00	Presentation of the 2022 ICCM Medalists' Research Achievements
12:00–14:00	Lunch

14:00–16:15 ICCM Forum—Fundamental Science and International Cooperation

14:00–14:30	Prof. Qi-Kun Xue Academician of the Chinese Academy of Sciences President of Southern University of Science and Technology Title: From Topology to Topological Insulators
14:30–15:00	Prof. Jinde Cao Academician of the Russian Academy of Sciences Head of School of Mathematics, Southeast University Title: Collective intelligence network and mathematics
15:00–15:15	Tea Break
15:15–15:45	Prof. Zhi-Hua Zhou Academician of the European Academy of Sciences Title: Open-environment machine learning
15:45–16:15	Prof. Qingfeng Liu Chairman of iFLYTEK Member of the Internet of Things Committee of All-China Federation of Industry and Commerce Title: Latest Progress and Future Trend of Artificial Intelligence Technology

05 Conference Service Information

Accommodation

Accommodation		
Hotel Name	Address	Telephone
The Purple Palace of Nanjing 南京紫金山庄	No.18 Huanling road, Xuanwu District, Nanjing 南京玄武区环陵路18号	025-84858888
Novotel Nanjing East Suning 南京玄武苏宁诺富特酒店	No.9 Suning avenue, Xuanwu District, Nanjing 南京玄武区苏宁大道9号	025-85208888
Nanjing Platinum Hanjue Hotel 南京白金汉爵大酒店	No.1 Zhigu avenue, Qixia District, Nanjing 南京市栖霞区智谷大道1号	025-66008888

▶ Instruction about the hotels

1. Room rates

For the participants whose room rates are paid by the Organizer, the Organizing Committee only pays the room rates from July 30th to August 6th (and the participants shall check out before 12:00, August 6th). The expenses for meals and laundry as well as the incidental expenses and extra consumption in the hotels (except for dinner on July 30th) shall be paid by the participants themselves.

2. Check-in/out policies

(1) **Purple Palace of Nanjing:** The check-in time shall be after 12:00 on the arriving day. One additional day room rate will be charged if checking in between 00:00-04:00am and an additional half-day room rate for checking in between 4:00-6:00am. The check-out time can be postponed to 14:00 on the leaving day. A half-day room rate will be charged for checking-out between 14:00-18:00 and a 1-day room rate for checking-out after 18:00. Discounted room rate applies.

(2) **Novotel Nanjing East Suning:** The participants shall check in after 14:00 on the arriving day. The participants may check in earlier if rooms are available. The normal check-out time of this hotel is 12:00, but could be postponed to 14:00 if permitted by the booking situation. If checking out between 14:00 to 18:00, an additional half-day room rate will be charged and full-day room rate after 18:00.

(3) **Nanjing Platinum Hanjue Hotel:** The check-in time shall be after 12:00 on the arriving day and the check-out time is before 12:00 on the leaving day. An additional half-day room rate will be charged for checking-out between 12:00-18:00, while an additional 1-day room rate for checking-out after 18:00. Discounted room rate applies.

Catering

Catering		
July 30	Dinner	In the hotel
July 31- August 6	Breakfast	In the hotel
July 31- August 5	Lunch	Jin's Café, the Purple Palace Conference Center
July 31- August 5	Dinner	Jin's Café, the Purple Palace Conference Center

Other dining arrangements

July 31	Banquet	Lagerstroemia Indica Ballroom, the Purple Palace Conference Center (For invited guests)
August 1	Banquet	Lagerstroemia Indica Ballroom, the Purple Palace Conference Center (For invited guests, paying lecturers/participants)
August 2	Banquet	Lagerstroemia Indica Ballroom, the Purple Palace Conference Center (Student-Faculty Exchange Meeting)

Note: The above meals are arranged by the Organizer. During the conference, please go to the designated place to have meals with your badge and meal voucher. Please always wear your badge and show the voucher. Dining at other times shall be arranged by the participants at their own expense.

Transportation

During the Conference, the organizer will provide shuttle service for the participants.

The arrangements are as follows:

Pick-up Service: airport/railway stations → hotels

July 30th	Pick-up Service: airport/railway stations → hotels
Route 1	Nanjing Lukou International Airport → Purple Palace of Nanjing, Nanjing Platinum Hanjue Hotel, Novotel Nanjing East Suning 9:00-22:00, shuttle runs every hour
Route 2	Nanjing South Railway Station → Purple Palace of Nanjing, Nanjing Platinum Hanjue Hotel, Novotel Nanjing East Suning 9:00-22:00, shuttle runs every half hour
Route 3	Nanjing Railway Station → Purple Palace of Nanjing, Nanjing Platinum Hanjue Hotel, Novotel Nanjing East Suning 9:00-22:00, shuttle runs every half hour

Shuttles between hotels and the Purple Palace Conference Center (July 30-August 5)

Jul. 30-Aug. 5	Hotels → The Purple Palace Conference Center
Route 1	Purple Mountain Villa → The Purple Palace Conference Center (5 mins ride) 6 shuttles: (1) departs 15 mins before the first morning activity of the day, (2) departs 15 mins before the second morning activity of the day, (3) departs 15 mins before lunch time of the day, (4) departs 15 mins before the first afternoon activity of the day, (5) departs 15 mins before the second afternoon activity of the day, (6) departs 15 mins before dinner time of the day.
Route 2	Nanjing Platinum Hanjue Hotel → The Purple Palace Conference Center (20 mins ride) 6 shuttles: (1) departs 40 mins before the first morning activity of the day, (2) departs 40 mins before the second morning activity of the day, (3) departs 40 mins before lunch time of the day, (4) departs 40 mins before the first afternoon activity of the day, (5) departs 40 mins before the second afternoon activity of the day, (6) departs 40 mins before dinner time of the day.
Route 3	Novotel Nanjing East Suning → The Purple Palace Conference Center (15 mins ride) 6 shuttles: (1) departs 30 mins before the first morning activity of the day, (2) departs 30 mins before the second morning activity of the day, (3) departs 30 mins before lunch time of the day, (4) departs 30 mins before the first afternoon activity of the day, (5) departs 30 mins before the second afternoon activity of the day, (6) departs 30 mins before dinner time of the day.

Jul. 30-Aug. 5 The Purple Palace Conference Center → Hotels

Route 1	The Purple Palace Conference Center → Purple Mountain Villa (5 mins ride) 4 shuttles: (1) departs 10 mins after the last morning activity of the day, (2) departs 10 mins after lunch ending time of the day, (3) departs 10 mins after the last afternoon activity of the day, (4) departs 10 mins after dinner ending time of the day.
Route 2	The Purple Palace Conference Center → Nanjing Platinum Hanjue Hotel (20 mins ride) 4 shuttles: (1) departs 10 mins after the last morning activity of the day, (2) departs 10 mins after lunch ending time of the day, (3) departs 10 mins after the last afternoon activity of the day, (4) departs 10 mins after dinner ending time of the day.
Route 3	The Purple Palace Conference Center → Novotel Nanjing East Suning (15 mins ride) 4 shuttles: (1) departs 10 mins after the last morning activity of the day, (2) departs 10 mins after lunch ending time of the day, (3) departs 10 mins after the last afternoon activity of the day, (4) departs 10 mins after dinner ending time of the day.

Drop-off Service: hotels → airport/railway stations

Aug. 3-Aug. 6	Drop-off Service: hotels → airport/railway stations
Route 1	Purple Palace of Nanjing, Nanjing Platinum Hanjue Hotel, Novotel Nanjing East Suning → Nanjing Lukou International Airport 8:00-20:00, shuttle runs every hour
Route 2	Purple Palace of Nanjing, Nanjing Platinum Hanjue Hotel, Novotel Nanjing East Suning → Nanjing South Railway Station 8:00-20:00, shuttle runs every half hour
Route 3	Purple Palace of Nanjing, Nanjing Platinum Hanjue Hotel, Novotel Nanjing East Suning → Nanjing Railway Station 8:00-20:00, shuttle runs every half hour

Note: During the Conference (July 31th- August 5th), the organizer will arrange shuttle buses for the participants to return to the hotels after the academic conferences and other activities each day. Please take the bus near the venues. Buses are also arranged for participants to have lunch in designated locations. All buses have the signboard of "9TH INTERNATIONAL CONGRESS OF CHINESE MATHEMATICIANS", and the participants will be guided to the shuttle buses by the staff or volunteers.

Gala for ICCM 2022

Time: 19:00-21:00, August 3rd (Wednesday)

Venue: International Convention Hall, the Purple Palace Conference Center

Programs:

Program 1: Opening Dance-Fragrant Jasmine

Program 2: Yue Opera-Wu Yi Lane

Program 3: Selected classical Chinese Opera

Program 4: Nanjing traditional Opera-Traveling in Nanjing

Program 5: Kun Opera-The Peach Blossom Fan

Program 6: Peking Opera-The Drunken Concubine

Program 7: Song-Night by Qinhuai River, Nanjing

Admission: By ticket

Tickets for the ICCM special performance will be allotted on a first-come-first-served basis from 14:00 to 17:00 on Wednesday, August 3rd, on the first floor, lobby of the Purple Palace Conference Center.

Contact Info

Contact Info-ICCM Affairs Office

Types	Venue	Contact Person	Telephone	Email
Academic Affairs	Winter Jasmine and Lily, 2nd Floor, Purple Palace Conference Center	Lin YAN	18505355528	iccm2022@tsinghua.edu.cn
Academic Affairs	Winter Jasmine and Lily, 2nd Floor, Purple Palace Conference Center	Tian HAN	18211182395	iccm2022@tsinghua.edu.cn
Academic Affairs	Winter Jasmine and Lily, 2nd Floor, Purple Palace Conference Center	Yueling CHEN	13511003731	iccm2022@tsinghua.edu.cn
Conference Affairs	Winter Jasmine and Lily, 2nd Floor, Purple Palace Conference Center	Hui ZHONG	13701404936	math@pub.seu.edu.cn
Conference Affairs	Winter Jasmine and Lily, 2nd Floor, Purple Palace Conference Center	Jingqi XIE	18994136959	math@pub.seu.edu.cn
Conference Affairs	Winter Jasmine and Lily, 2nd Floor, Purple Palace Conference Center	Yue LU	15365073402	math@pub.seu.edu.cn

Maps

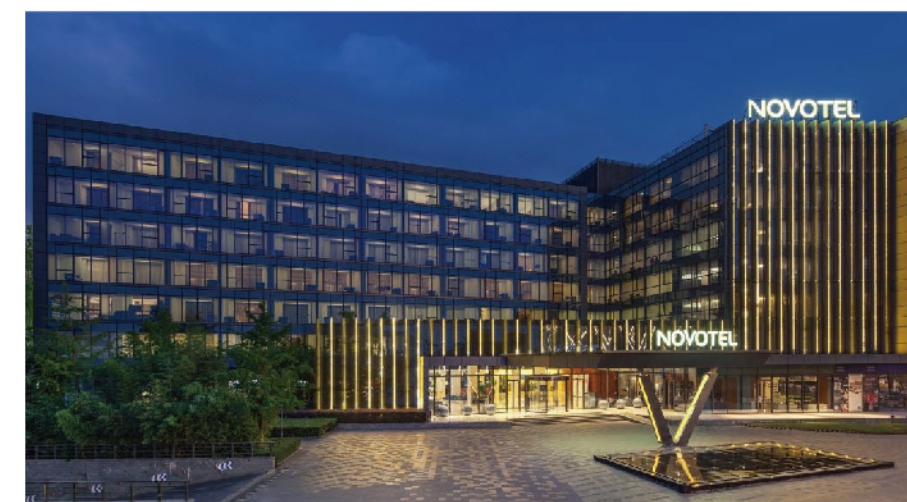


Hotel 1: The Purple Palace of Nanjing

10 km from Nanjing Railway Station, 15 minutes by car

23 km from Nanjing South Railway Station, 30 minutes by car

56 km from Nanjing Lukou International Airport, 50 minutes by car



Hotel 2: Novotel Nanjing East Suning

11 km from Nanjing Railway Station, 16 minutes by car

21 km from Nanjing South Railway Station, 20 minutes by car

52 km from Nanjing Lukou International Airport, 50 minutes by car

6 km from the Purple Palace of Nanjing, 15 minutes by car



Hotel 3: Nanjing Platinum Hanjue Hotel

10 km from Nanjing Railway Station, 15 minutes by car

23 km from Nanjing South Railway Station, 30 minutes by car

56 km from Nanjing Lukou International Airport, 50 minutes by car

6 km from Novotel Nanjing East Suning, 15 minutes by car

8 km from the Purple Palace of Nanjing, 15 minutes by car



Map of main locations

(As numbers shown in the above map: 1. The Purple Palace of Nanjing; 2. Novotel Nanjing East Suning; 3. Nanjing Platinum Hanjue Hotel; 4. Nanjing Railway Station; 5. Nanjing South Railway Station; 6. Nanjing Lukou International Airport.)

ACKNOWLEDGEMENTS

The ICCM2022 Organizing Committee sincerely acknowledges the following institutions, organizations, and their staff for the valuable support to the ICCM 2022.

Supporters

Nanjing Municipal People's Government
Nantong Municipal People's Government

Hosts

Southeast University
Tsinghua University
Nanjing Chi-Lin Technology Innovation Park

Organizers

School of Mathematics, Southeast University
Yau Mathematical Sciences Center, Tsinghua University
Shing-Tung Yau Center, Southeast University
Nanjing Center for Applied Mathematics

Sponsors

Nanjing Panlong Advertising and Culture Co., Ltd
iFLYTEK
Freetech Road Recycling Technology (Holdings) Limited
Nanjing Purple Mountain Institute
Yilin Press

Consulting Organizations

Nanjing Municipal Science and Technology Bureau
Nanjing Municipal Education Bureau
Nanjing Municipal Health Commission

Livestreaming Platforms

